

Regional Conservation Partnership Program

RCPP

RCPP Program Options:

- 1) Agricultural Conservation Easement Program (ACEP)
 - a) ACEP – Wetland Reserve Easements (WRE)
 - b) ACEP – Agricultural Land Easements (ALE)
- 2) Environmental Quality Incentive Program (EQIP)
- 3) Conservation Stewardship Program (CSP)
- 4) Healthy Forest Reserve Program (HFRP)
- 5) PL 83-566 Watershed Authority



Tribal Stream and Michigan Fruitbelt Collaborative

5 BIOLOGY » *Biodiversity and the life histories of aquatic and riparian life*

4 PHYSIOCHEMICAL » *Temperature and oxygen regulation; processing of organic matter and nutrients*

3 GEOMORPHOLOGY » *Transport of wood and sediment to create diverse bed forms and dynamic equilibrium*

2 HYDRAULIC » *Transport of water in the channel, on the floodplain, and through sediments*

1 HYDROLOGY » *Transport of water from the watershed to the channel*

Image Credit:



wharman@stream-mechanics.com

Restoring & Connecting Ecosystems

- Climate Change Resilience
- Aquatic Connectivity
- Habitat for fish and aquatic species
- Improving Water Quality
 - Natural temperature and flow regimes
 - Decreasing sedimentation and nutrients



Monitoring and Evaluation

- Fish Surveys
- Herpetofauna Surveys
- Macroinvertebrate Surveys
- Water Quality

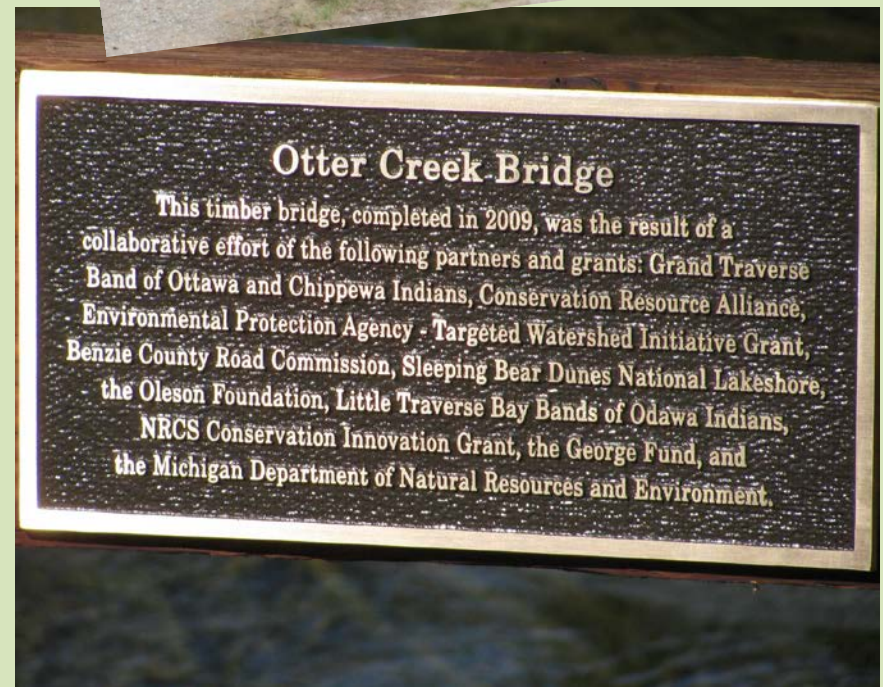


Why and how to become a Partner

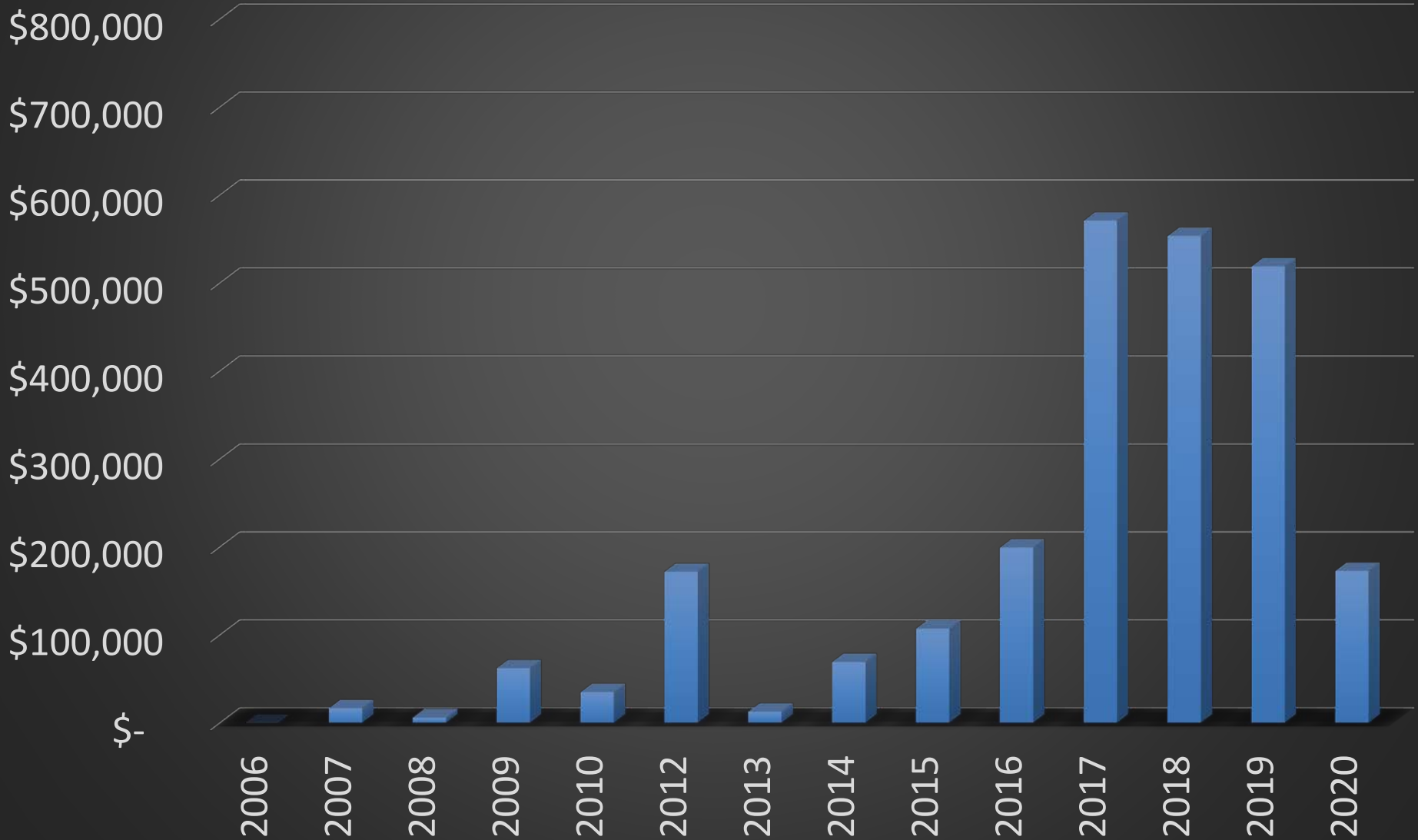
- “... where Tribes have treaty-ceded hunting, fishing and gathering rights...”
- Sustain and protect cultural resources for Tribal use or for subsistence

How can we collaborate?

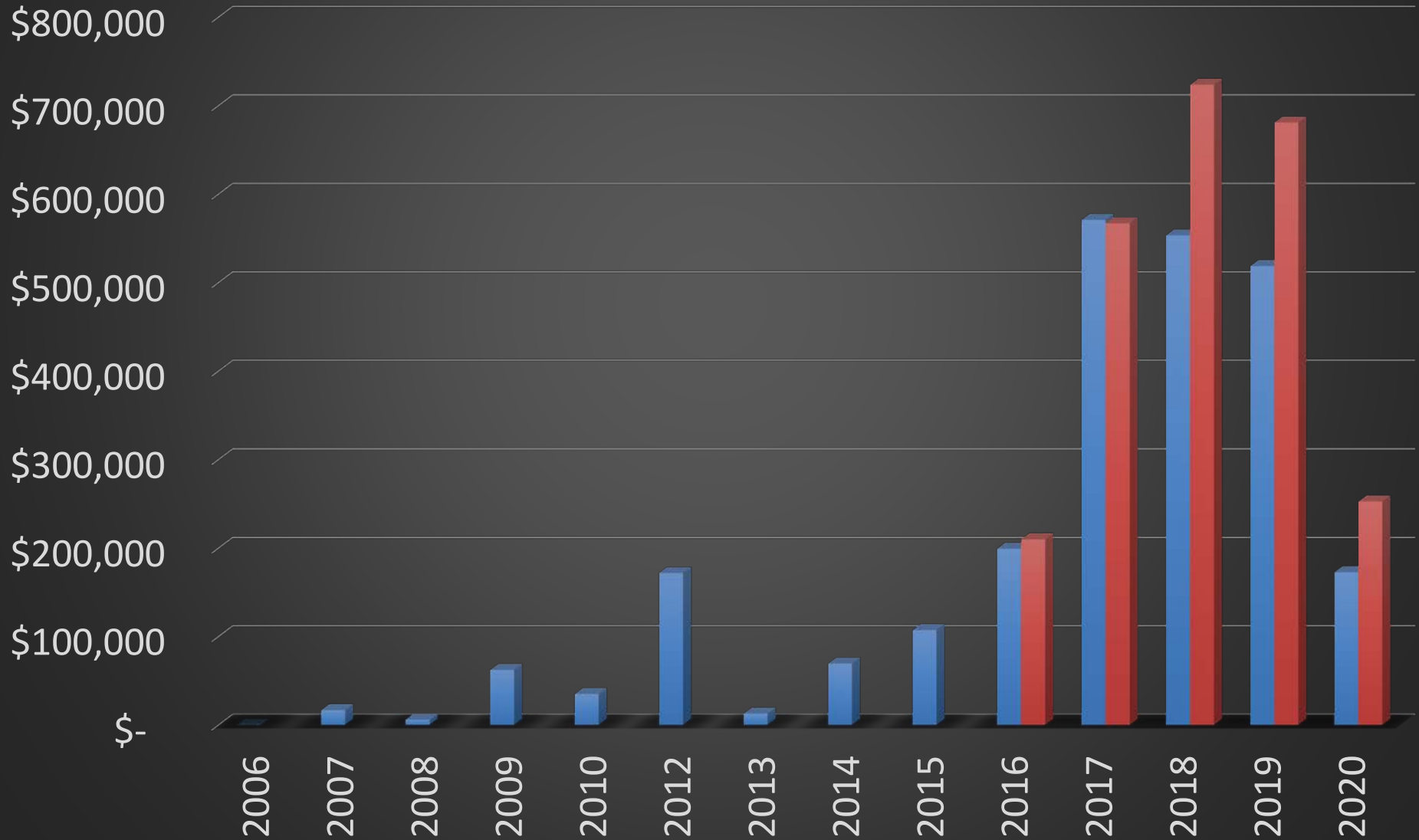
- Funding
 - Direct
 - In-kind
- Monitoring
- Education and Outreach



GTB-NRCS Cost Share Applied to Road-Stream Crossing Improvements - From 2006 and Looking Ahead



GTB-NRCS Cost Share Applied to Road-Stream Crossing Improvements - From 2006 and Looking Ahead



Tribal-Fruitbelt Contributing Partners

- **Grand Traverse Band of Ottawa and Chippewa Indians**
- **Conservation Resource Alliance**
- **Grand Traverse Regional Land Conservancy**
- **Leelanau Conservancy**
- **Little Traverse Bay Bands of Odawa Indians**
- **American Farmland Trust**
- **Great Lakes Fishery Trust**
- **Huron-Manistee National Forest**
- **Michigan Department of Natural Resources**
- **United States Fish and Wildlife Service**
- **Grand Traverse Conservation District**
- **Grand Traverse County Road Commission**
- **Leelanau County Road Commission**
- **Leelanau Conservation District**
- **Land Trust Alliance**
- **Little Traverse Conservancy**
- **Peninsula Township**
- **Benzie Conservation District**
- **Michigan Department of Environmental Quality**
- **Acme Township**

Tribal-Fruitbelt: Aquatic Organism Passage Project Selection

Basic Program Eligibility

- USDA-Natural Resources Conservation Service - Conservation Plan
- Land Eligibility
- Applicant Eligibility

Project Selection – Tier I - Screening

- High: Tribal-Fruitbelt contributing partner application or Tribal-Fruitbelt endorsement
- Medium: Meets two or more of the following minimum criteria: 11 lbs/yr N load reduction, 1 lbs/yr P load reduction, 4.5 lbs/yr Sediment load reduction, 4 Miles of Stream opened up, priority action in a watershed plan.
- Low: Meets only one of the above listed minimum criteria.

Project Selection – Tier II – Ranking

- Brook Trout or Lake-to-Stream connectivity, % funding from other sources, address a watershed plan's critical area or high ranking source of pollution, remove an impoundment of at least one acre, miles of stream opened up.

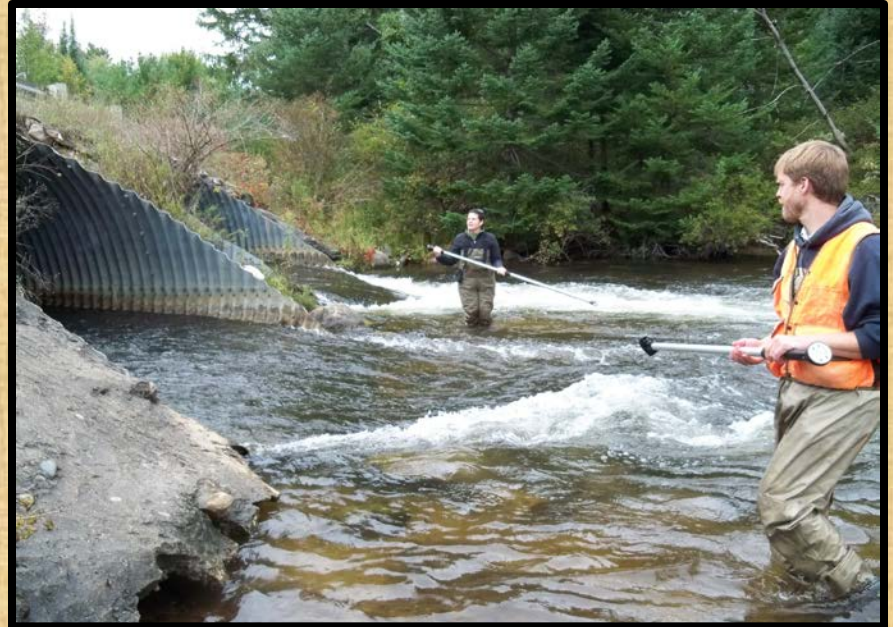
Phases and Timeline of a Project

- Inventory & Classify
Road Stream
Crossing and Barriers
- Existing pre-
monitoring data and
research
- Grant writing and
Fundraising
- Request for Proposals
- Design and Studies
- NEPA
- Permits



Phases and Timeline of a Project

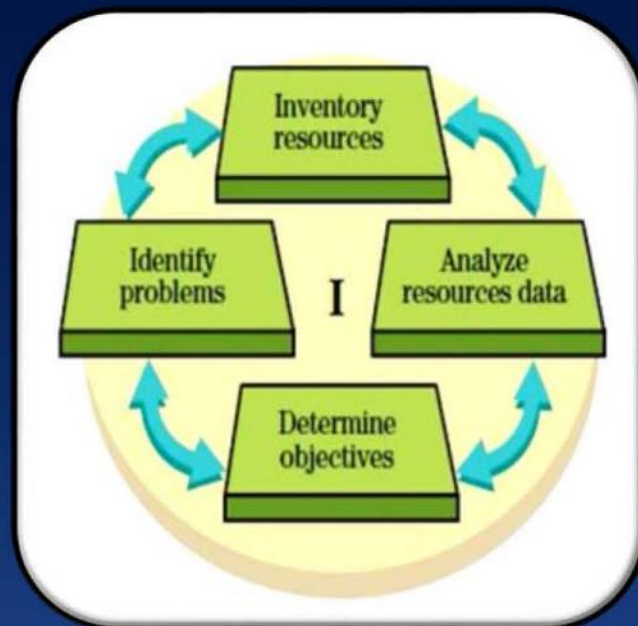
- Requests for Bids
- Construction Phase
 - Dependent on partner schedules, restrictions or permit
- Final evaluation and approval of work completion
- Post-monitoring and research
- Total project timeline=3-5 years sometimes longer



Planning Process

The first 4 steps of conservation planning are:

1. Inventory resources
2. Identify problems
3. Landowner objectives
4. Analyze resource data



NRCS Technical Specialists staff:

- Engineer
- Biologist
- Stream Mechanics Engineer
- Geologist
- Soil Scientist
- Fisheries Biologist
- Fluvial Geomorphologist
- Others.....

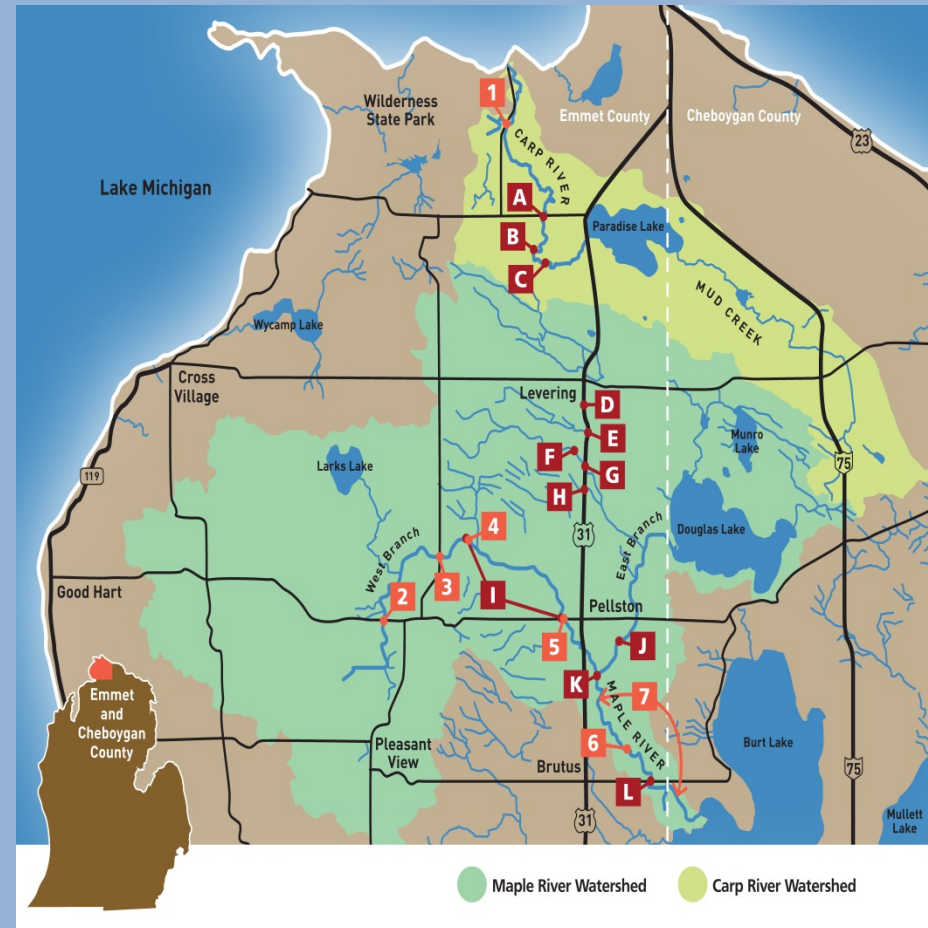


For Stream Crossings

- Stream problems are not just site limited, they may affect a fairly long reach of a stream.
- Project Planning should consider sediment continuity and channel stability first.
- Projects on existing crossings, should be considered to be stream channel restoration projects, and not road repair projects.
- Consider elimination of the existing crossing first

RCPP Commitments

- Remove a minimum of 40 barriers in up to 8 major watersheds to restore subsistence fishing for over 1,000 tribally licensed fishers by opening 135 miles of stream.
- Preventing 180 tons of sediment; 45 lbs. of phosphorous and 117 lbs. of nitrogen from entering ground and surface water.
- Accelerate and support the implementation of 8 different State and Federally approved watershed management plans.
- Provide outreach once a year through workshops, newsletters, websites, news releases, presentations, social media outlets, etc.
- Assist potential program participants with meeting eligibility requirements.
- Develop conservation plans for potential program participants.
- Provide engineering designs and implementation for 8 sites with contracted structural practices.
- Watershed surface water quality monitoring data.



Contact Information



Conservation Resource Alliance

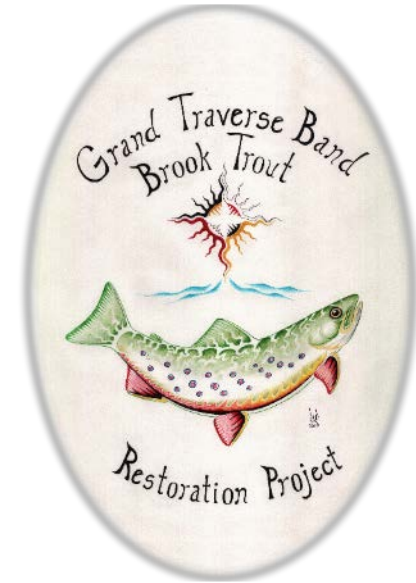
Kira Davis, Program Coordinator

Email: kira@rivercare.org

Phone: 231.946.6817

www.northernmichiganstreams.org

www.rivercare.org



DJ Shook, Conservationist

Email: dj.shook@mi.usda.gov and

donald.shook@gtbindians.com

Phone: 231-941-0951 ext 117

Thank You!

