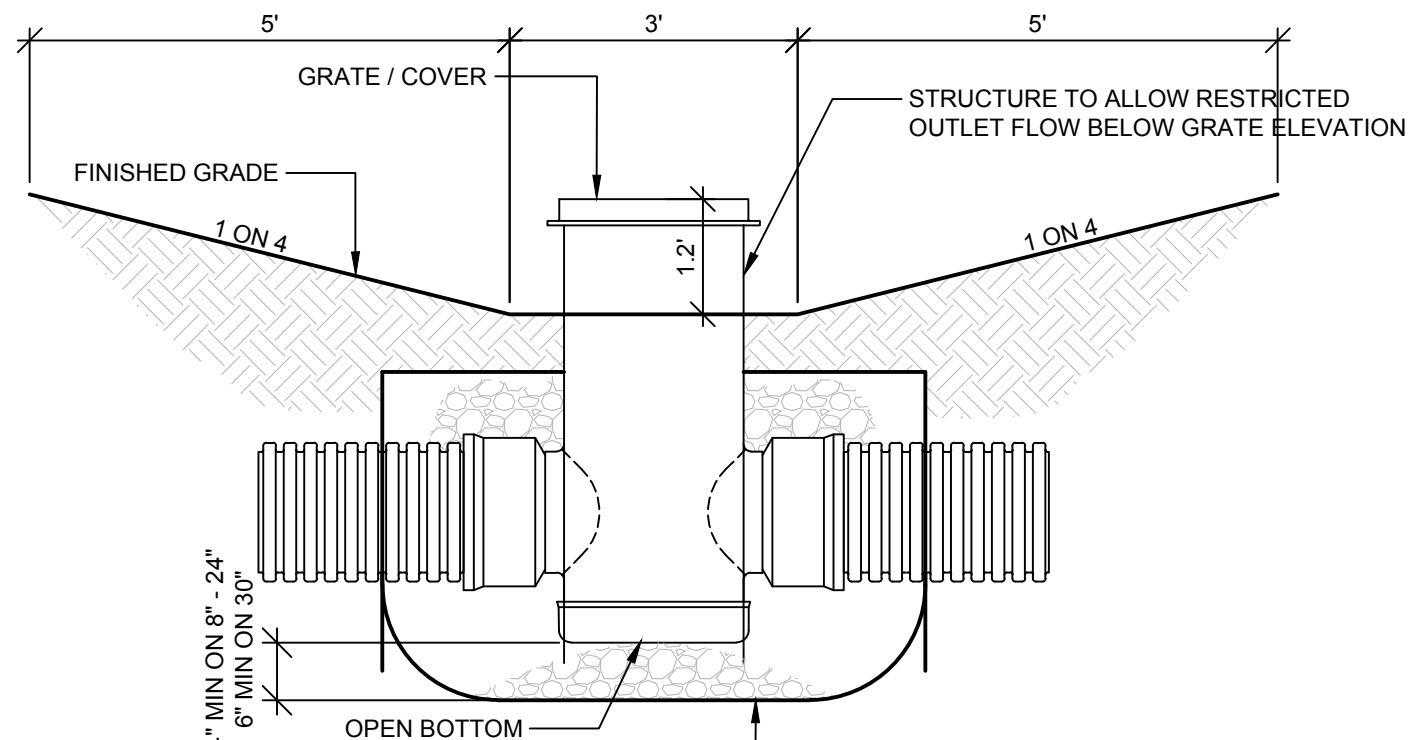


VICINITY MAP
SCALE: NONE
PROJECT LOCATION

STORM STRUCTURES

ST001 PROPOSED DR STRUCTURE COVER G	RIM 870.94 INV. 867.35 - 6" NW INV. 867.30 - 18" SW INV. 867.35 - 6" SE	ST010 DR STRUCTURE, 48 INCH COVER B	RIM 871.22 INV. 867.17 - 18" N INV. 867.16 - 18" S	ST019 DR STRUCTURE, 48 INCH COVER G	RIM 873.01 INV. 869.65 - 6" SW INV. 869.62 - 12" NW INV. 869.65 - 6" NE
ST002 DR STRUCTURE, 24 INCH COVER G	RIM 871.55 INV. 867.84 - 6" NW INV. 867.84 - 6" SE	ST011 DR STRUCTURE, 48 INCH COVER G	RIM 871.48 INV. 867.75 - 12" E INV. 867.78 - 6" N INV. 867.74 - 18" S	ST020 DR STRUCTURE, 48 INCH COVER G	RIM 873.01 INV. 869.41 - 12" SE INV. 869.45 - 6" N INV. 869.40 - 18" S
ST003 DR STRUCTURE, 24 INCH COVER G	RIM 871.68 INV. 868.46 - 6" SE INV. 868.46 - 6" NW	ST012 DR STRUCTURE, 48 INCH COVER G	RIM 871.48 INV. 868.00 - 6" S INV. 867.96 - 12" W INV. 868.00 - 6" N	ST021 DR STRUCTURE, 24 INCH COVER G	RIM 873.06 INV. 869.54 - 6" NE INV. 869.54 - 6" SW
ST004 DR STRUCTURE, 24 INCH COVER G	RIM 872.21 INV. 868.91 - 6" S INV. 868.91 - 6" N	ST013 DR STRUCTURE, 24 INCH COVER G	RIM 872.63 INV. 868.77 - 6" S INV. 868.77 - 6" N	ST022 DR STRUCTURE, 48 INCH COVER G	RIM 869.76 INV. 866.65 - 6" SE INV. 866.60 - 12" NE INV. 866.65 - 6" NW
ST005 DR STRUCTURE, 48 INCH COVER G	RIM 871.82 INV. 869.55 - 6" S INV. 869.50 - 12" W INV. 869.55 - 6" N	ST014 DR STRUCTURE, 24 INCH COVER G	RIM 872.73 INV. 868.60 - 6" N INV. 868.60 - 6" S	ST023 DR STRUCTURE, 48 INCH COVER G	RIM 869.76 INV. 866.40 - 12" SW INV. 866.45 - 6" NW INV. 866.35 - 18" NE INV. 866.45 - 6" SE
ST006 DR STRUCTURE, 48 INCH COVER G	RIM 871.82 INV. 869.30 - 12" E INV. 869.29 - 18" N INV. 868.12 - 6" S	ST015 DR STRUCTURE, 24 INCH COVER G	RIM 873.24 INV. 869.07 - 6" N INV. 869.07 - 6" S	ST024 DR STRUCTURE, 24 INCH COVER G	RIM 870.54 INV. 867.64 - 6" E INV. 867.64 - 6" W
ST007 DR STRUCTURE, 48 INCH COVER G	RIM 872.26 INV. 869.09 - 18" S INV. 869.08 - 18" N	ST016 DR STRUCTURE, 24 INCH COVER G	RIM 873.35 INV. 870.99 - 6" N INV. 870.99 - 6" S	ST025 DR STRUCTURE, 24 INCH COVER G	RIM 871.24 INV. 868.27 - 6" E INV. 868.27 - 6" W
ST008 DR STRUCTURE, 24 INCH COVER G	RIM 872.14 INV. 869.98 - 6" S INV. 869.98 - 6" N	ST017 DR STRUCTURE, 24 INCH COVER G	RIM 873.33 INV. 870.13 - 6" S INV. 870.13 - 6" N	ST026 DR STRUCTURE, 24 INCH COVER G	RIM 871.28 INV. 867.92 - 6" W INV. 867.92 - 6" E
ST009 DR STRUCTURE, 48 INCH COVER B	RIM 871.20 INV. 868.75 - 18" S INV. 868.80 - 6" N INV. 868.73 - 18" NW	ST018 DR STRUCTURE, 48 INCH COVER B	RIM 873.13 INV. 869.20 - 18" N INV. 869.18 - 18" W INV. 870.63 - 6" S		



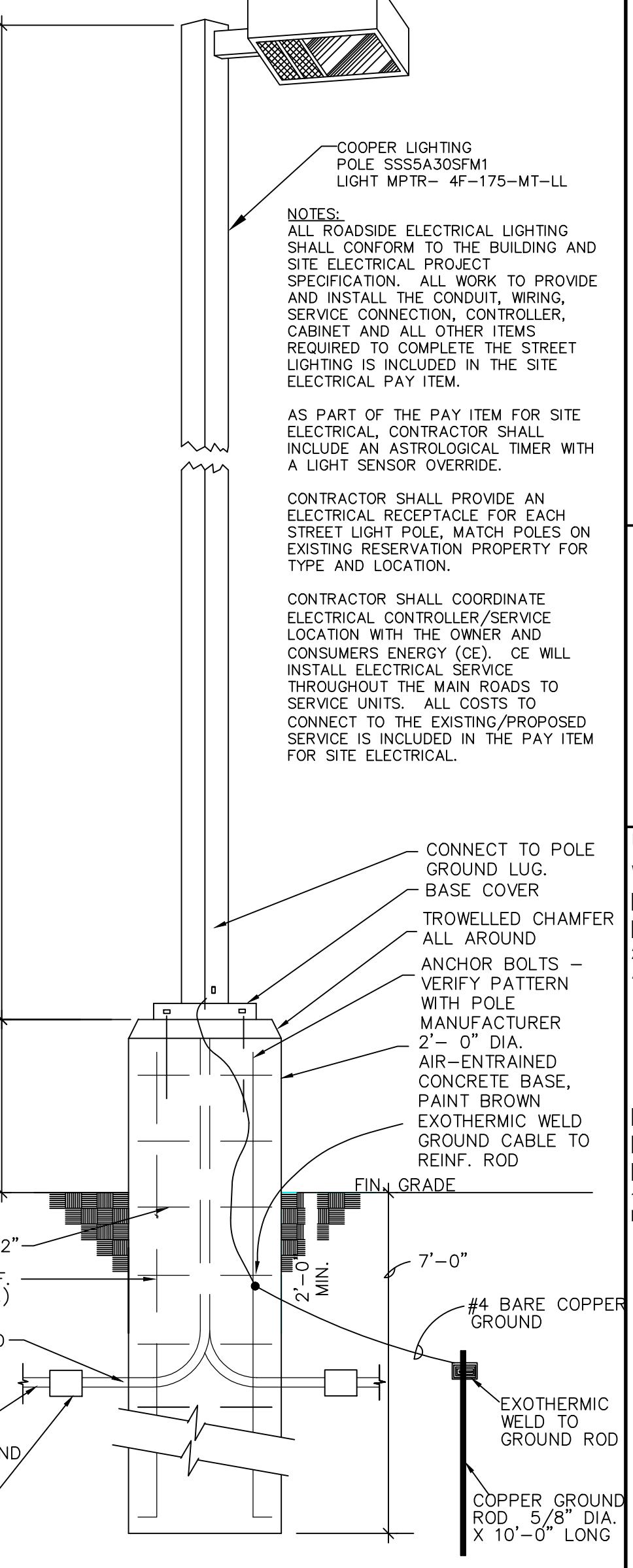
THE BACKFILL MATERIAL SHALL BE CRUSHED STONE OR OTHER GRANULAR MATERIAL MEETING THE REQUIREMENTS OF CLASS I, CLASS II, OR CLASS III MATERIAL AS DEFINED IN ASTM D2321. BEDDING & BACKFILL FOR SURFACE DRAINAGE INLETS SHALL BE PLACED & COMPACTED UNIFORMLY IN ACCORDANCE WITH ASTM D2321.

DRAINAGE STRUCTURE DETAIL

SCALE: NONE

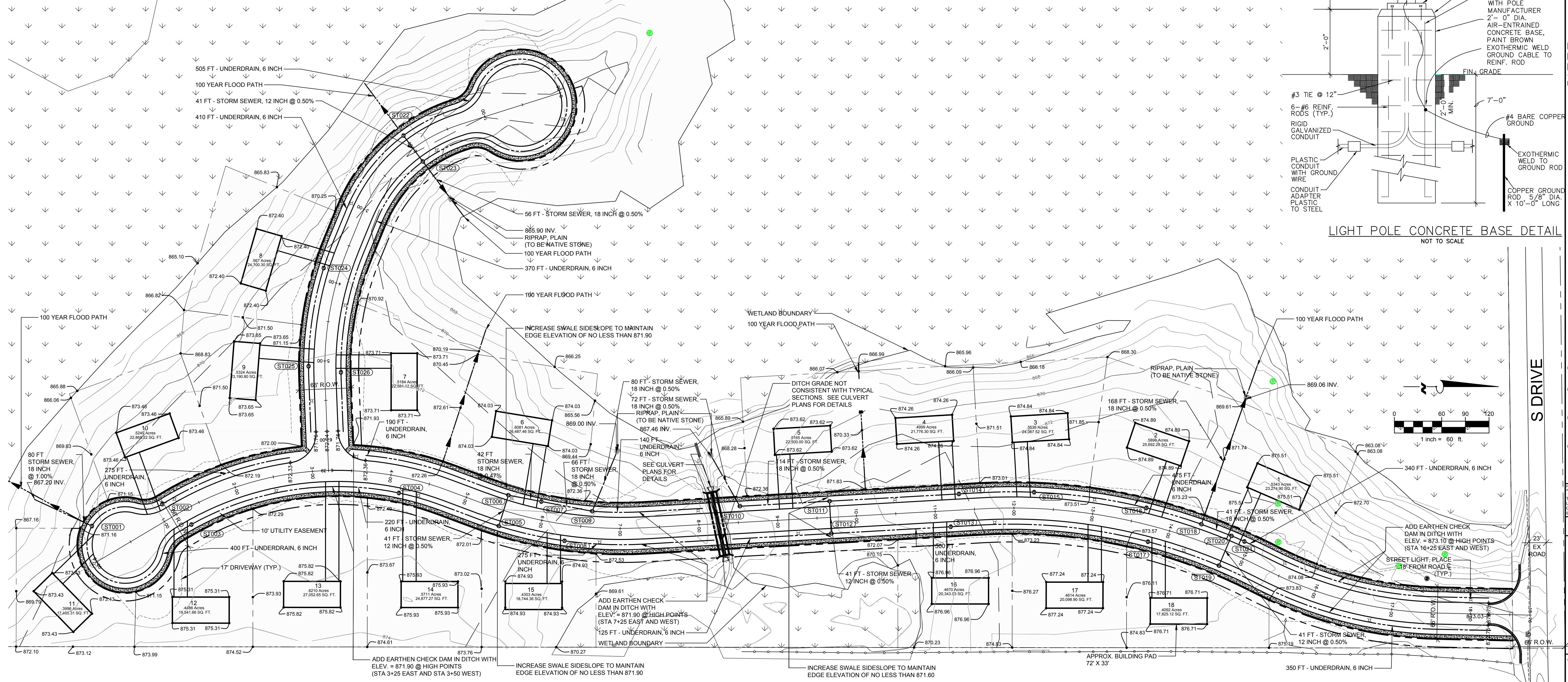
NOTE:

ROAD PLANS PREPARED BY BIA



LIGHT POLE CONCRETE BASE DETAIL

NOT TO SCALE



WIGHTMAN
BENTON HARBOR
269.927.0100
KALAMAZOO
269.327.3532
ALLEGAN
269.673.8465
ROYAL OAK
248.791.1371
www.wightman.com

PROJECT NAME:
WIDOKWTADWEN DEVELOPMENT - ROADWAY
2548 S DRIVE SOUTH
ATHENS, MI 49011

NOTTAWASEPPI HURON BAND OF POTAWATOMI
1485 MNO BMADEZEN WAY
FULTON, MI 49052

04/6/28/2022
ISSUED FOR BIDS EJK
03/5/06/2022
DRIVEWAY AND DRAIN UPDATES EJK
01/11/10/2021
FOR STORMWATER REVIEW AMV
00 PRELIMINARY - NOT FOR CONSTRUCTION

REVISIONS
THE REPRODUCTION, COPYING OR OTHER USE OF THIS DRAWING WITHOUT WRITTEN CONSENT IS PROHIBITED.
© 2022 WIGHTMAN & ASSOCIATES, INC.
DATE: JUNE, 2022
SCALE: 1" = 60'

SITE GRADING AND STORM SEWER
JOB No. 210241
CG01